

**Training in the Care of People
with Cognitive Impairments**

**LEARN HOW TO DEVELOP
ACTIVITIES FOR ADULTS WITH
ALL FORMS AND LEVELS OF
DEVELOPMENTAL DISABILITIES**

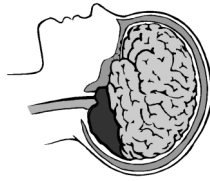
**A STEP BY STEP GUIDE TO
PROVIDE ENGAGEMENT**

***NOW YOU CAN EARN 30 Ohio
DODD CEC/CPD CREDITS AT
WORK WITH YOUR CLIENTS***



Snoezelen Multi Sensory Activities

**Students may have as long as
needed to complete and return
assignments. Time tally sheets
are included so documentation
of 30 hours of work can be pro-
vided to A.I.D. and Ohio DODD.
Certificates of completion are
mailed out the same day your
completed assignments are re-
ceived in our office.**



**Ohio DODD APPROVED
30 CEC/CPD
CORRESPONDENCE COURSE FOR**

**A.I.D. Training
P. O. Box 1363
Medina, OH 44258
4aid@dementia-help.com
330-723-8838
Address Service Requested**

**PRESORTED
STANDARD
U.S. POSTAGE PAID
MEDINA, OH
PERMIT 227**

Engaging Activities

**For Day Programming of
Adults with
Developmental Disabilities**

30 Hour Correspondence Course

**(only \$175.00 + shipping
and handling)**

**Designed to Provide Quality of Life
for Adults with
Cognitive Impairments**

**Approved for
30 CEC/CPD by Ohio DODD
Approval #07-01291-1**



**Mail Registration to:
A.I.D. Training
PO Box 1363,
Medina, Ohio 44258
330-723-8838
Fax: 330-722-2704**

4aid@dementia-help.com

AUTHORS

Sally Albrecht, M.A. is the owner of A.I.D. Training and has been working in the field of Aging and MR/DD since 1982. She has a Master's Degree in Cognitive Psychology with extensive training in Applied Cognitive Aging and a Graduate Certificate in Gerontology. She currently teaches psychology classes at Lorain Co. Community College in Elyria, Ohio. She is a presenter at NADD's Regional Conferences and has written a series of articles for the Activity Directors' Quarterly. Sally is the author of *Managing Dementia: Improving Quality of Life for Older Adults with Dementia*. She serves on the Editorial Board for the American Journal of Alzheimer's Disease and Other Disorders.



Facial Massage

Cindy Holland, M.S. has been working with people with varying disabilities for over 20 years and is a devoted advocate for her friends with disabilities. She has a Master's Degree in both Special Education and Outdoor Education and has a Certificate in Recreational Therapy. She was instrumental in bringing the Snoezelen® Multi-Sensory concept to the forefront in the US for individuals with MR/DD and older adults with dementia. She was a presenter at the 3rd World Snoezelen® Conference in 1999. Her company, Holland Consultants develops and implements Snoezelen® activities for older adults with dementia and individuals with MR/DD. Her publications may be read in the Activity Director's Quarterly Journal.

TABLE OF CONTENTS

166 page manual is shipped by priority mail

Section 1	Introduction
Chapter 1:	Brain Development in Humans
Chapter 2:	Developmental Disabilities
Chapter 3:	Learning Modalities
Assignment 1:	Learning Modality Activity and Paper
Section 2:	Activities for Individuals with Mild/ Moderate Levels of Developmental Disabilities
Chapter 4:	Elements of Activity Development
Chapter 5:	Words and Word Games
Chapter 6:	Discussion Groups and Scavenger Hunts
Chapter 7:	Exercise, Music, TV/Videos and Matching Activities
Chapter 8:	Montessori Activities
Assignment 2:	Activity Schedule Development
Section 3:	Activities for Individuals with Severe/ Profound Levels of Developmental Disabilities
Chapter 9:	Elements of Multi-Sensory Activities
Chapter 10:	Snoezelen®
Chapter 11:	Gustatory and Olfactory System
Chapter 12:	Visual System
Chapter 13:	Auditory System
Chapter 14:	Tactile System
Assignment 3:	Multi Sensory Activity Development
Section 4:	Activities for Everyone
Chapter 15:	Enhanced Dining Experience
Chapter 16:	Complementary Therapies
Assignment 4:	Program Development Activity
References	
Appendix A:	Preferred Learning Modality Assessment
Appendix B:	Engagement Assessment
Appendix C:	Engagement Assessment Sum Sheet
Appendix D:	Sensory Chart
Appendix E:	Sample Sensory Chart
Resources	

REGISTRATION

\$175.00

Name: _____

Address: _____

Phone: _____

Email: _____

Amount Enclosed: _____

OR Purchase Order #: _____

Complete, detach and mail registration form with your check to the address below. Your manual will be sent by return mail. Payment must be received in advance unless other arrangements have been approved in advance. **Add \$20.00 for shipping and handling.**

**Mail registration and payment to:
A.I.D., PO Box 1363,
Medina, OH 44258**

Ohio DODD APPROVED

30 CEC/CPD

CORRESPONDENCE COURSE

FOR DAY PROGRAMMERS

330-723-8838
4aid@dementia-help.com